

## Starting the DCS Communicator

### Entering access data

When starting the DCS Communicator, the user name and password must be entered.

-----  
User name

-----  
Password (entered by the electrician)

## Setting up DCS Communicator

### Access data

Modifications to the DCS Communicator can be made using the Assistant of the DCS-IP-gateway and the access data specified above. For this purpose, the access data of the DCS Communicator are input into the registration mask of the start-up assistant of the DCS-IP-gateway. Modifications such as assignment of the function keys can be set up in the Assistant.

### Changing password

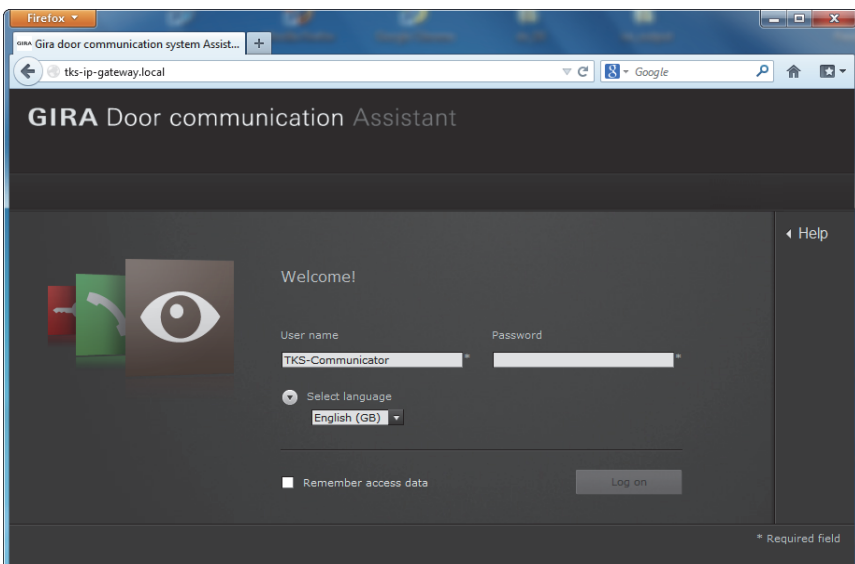
When starting up the DCS-IP-gateway, the electrician defines the settings for the DCS Communicator. In doing so, he assigns the user name and password. For security reasons this password should be modified via the "Settings" menu, and "Change password".

### Starting the Gira Assistant

The Assistant of the DCS-IP-gateway can be started in standard browsers (Mozilla Firefox, Microsoft Internet Explorer, Apple Safari, Google Chrome). To start the Gira Assistant, click on the link displayed in the menu "Settings" - "Set up DCS Communicator".

Or to call up the Assistant manually, enter **http://TKS-IP-Gateway.local** into the browser's address bar.

The registration mask of the Gira Assistant is displayed after around 30 s. The desired modifications to the DCS Communicator can be carried out after entering the DCS Communicator access data.



## Interface of the DCS Communicator

