

Buscoupling modul flush mounted

Order No. 0550 00

This device is a produkt of the *Instabus* EIB system and meets EIBA regulations. Detailed technical knowledge obtained in *Instabus* training courses are prerequisite for proper understanding.

Application

The buscoupling module establishes the connection between the *Instabus* EIB and a maximum of 2 flush-mounted actuator modules. A dual touch sensor, a single touch sensor, or a blank cover can alternatively be put on the buscoupling module.

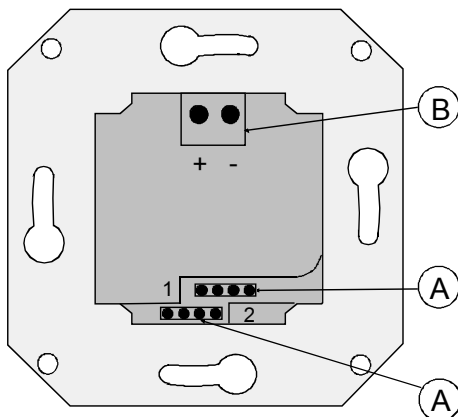
Function

The function of this device is depending on the Software. For detailed Information on which Software may be used leading to what extension of operability please see manufacturer's product data base.

Indications of danger

- Attention! Refer installation and assembly work to qualified personnel only.
- 230 V lines such as for the supply of flush-mounted actuator modules must not be run through the flush-mounted box of the buscoupling module.
- If *Instabus* EIB wall mounted devices and earthed sockets shall be used in a multiple combination, earthed GIRA sockets with screwless plug terminals are to be used as they guarantee shock protection even after removal of the cover.

Installation

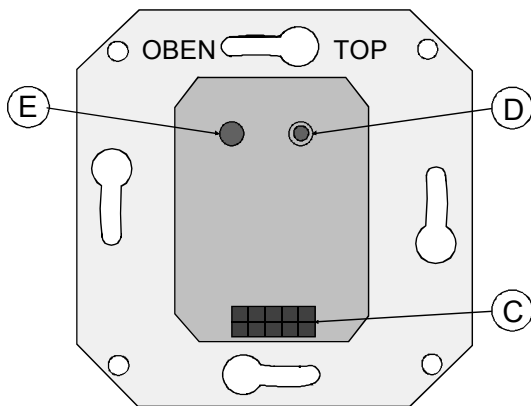


Planning, installation and commissioning of the unit is done by means of EIBA certified software.

Installation sequence:

1. Install related flush-mounted actuator modules in accordance with separate installation instructions.
2. Insert connection plugs of actuator modules into sockets (A) of buscoupling module (refer to illustration).
3. Insert *Instabus* connection terminal into socket (B) of buscoupling module.
4. Insert buscoupling module into flush-mounted box and screw up. (A 60 mm deep box is recommended.) For installation position, refer to illustration.
5. After assigning the physical address (see below), put a blank cover, a single touch sensor, or a dual sensor on the buscoupling module. Contacting is made via the touch sensor interface (C).

Note: (C) is a modified "AST" user interface and cannot be used for other application modules.



Application of physical address

To apply the physical address the programming key (D) must be actuated.

The red LED (E) lights up and goes out when the physical address has been taken over.

Technical Data

Supply

Instabus EIB: 24 V DC (+6 V/ -4 V)

Power drain

without application module: max. 100 mW
with application module: max. 150 mW

Number of control outputs for flush-mounted actuator modules: 2

Touch sensor interface (C): Suitable for the operation of a single or dual touch sensor. It is a modified "AST" interface.

Connection

Instabus EIB: Connection terminal and branch joint (B)
Phys. external Interface: 2 x 5-pole female connector (C)
Actuator module interfaces: 2, 4-pole male connector each (A)

Ambient temperature: -5 °C...+45 °C

Storage temperature: -40 °C...+55 °C

Type of protection: IP 20

Protection class Schutzklasse: III

Built-in sizes: Matching 60 mm dia. flush-mounted box
(a 60 mm deep box is recommended)

Acceptance of guarantee

We accept the guarantee in accordance with the corresponding legal provisions.

Please return the unit postage paid to our central service department giving a brief description of the fault:

Gira
Giersiepen GmbH & Co. KG
Service Center
Dahlienstrasse 12
D-42477 Radevormwald



The CE sign is a free trade sign addressed exclusively to the authorities and does not include any warranty of any properties.

Gira
Giersiepen GmbH & Co. KG
Postfach 1220
D-42461 Radevormwald

Telefon: +49 / 21 95 / 602 - 0
Telefax: +49 / 21 95 / 602 - 339
Internet: www.gira.de