

Installation and  
Operating Instructions

**Door Station Stainless Steel**

2501 20, 2502 20, 2503 20

2504 20, 2506 20, 2508 20

2509 20, 2510 20, 2512 20

**GIRA**



**Table of contents**

---

Device description ..... 5

Installing panel box ..... 6

Installing front panel ..... 8

Start-up ..... 9

Multi-function input ..... 9

Replacing inscription label ..... 10

Opening Door Station Stainless Steel ..... 12

Operation ..... 13

Technical data ..... 14

Warranty ..... 14



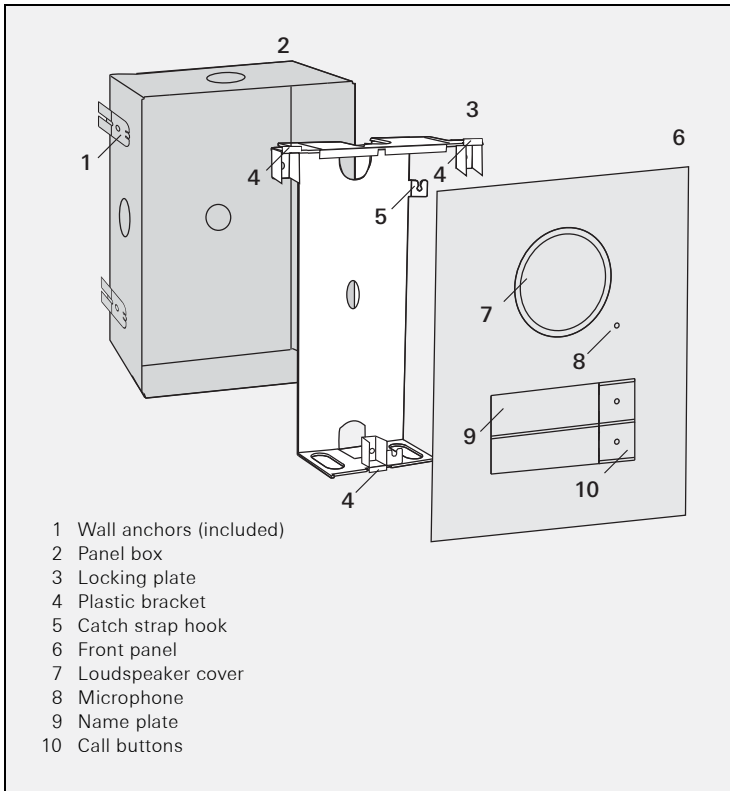
## Device description

The Door Station Stainless Steel is a pre-assembled, vandalism-protected door station for the Gira door communication system.

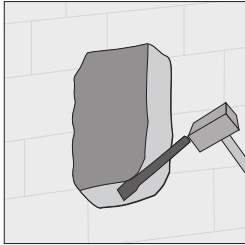
The front plate of high-quality V2A stainless steel with a thickness of 3 mm is especially robust. The call buttons are also made of durable stainless steel. The illuminated inscription labels are covered by a fully secured and flameproof glass plate. The inscription labels can be opened via a covered mechanism and can then be removed from the front.

Both the call buttons and inscription labels are uniformly illuminated with a white, power-saving LED element.

Loudspeaker and microphone are located behind the respective sound openings and are water-resistant and vandal-proof.



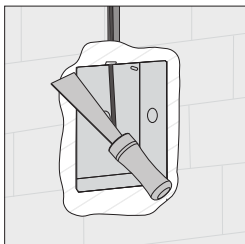
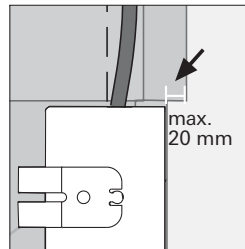
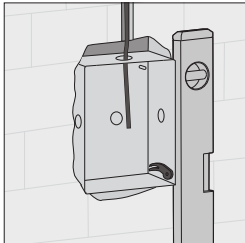
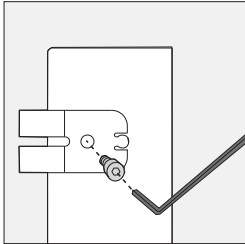
## Installing panel box



### Attention

Installation and mounting of electrical devices may only be carried out by a qualified electrician.

1. Select a suitable installation site and chisel an opening in the wall.
2. If necessary, mount the included wall anchor.

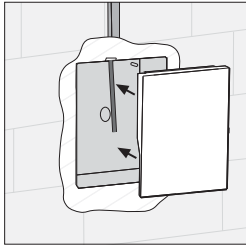


Note the following information when mounting the panel box:

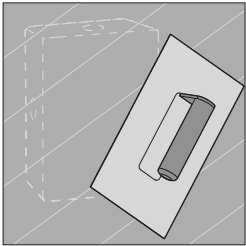
- Ensure installation position is correct. (note the "TOP" labelling).
- The panel box must be installed level. With the later mounting of the Door Station Stainless Steel there is no possibility for correction.
- The panel box must be installed as flush to the surface as possible!

It must be ensured that the locking plate can be flush-mounted later. Maximum plaster compensation is 20 mm.

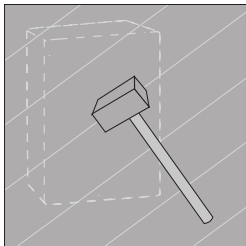
3. Plaster in the panel box to be flush with the final surface (maximum plaster compensation 20 mm).



4. Mount the included plaster protection.

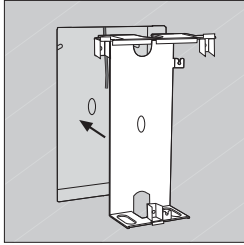


5. Plaster the wall.



6. **Carefully** remove the plaster and take out the plaster protection.

## Installing front panel

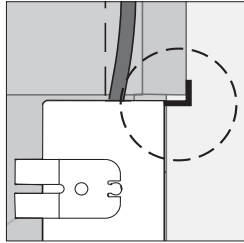


1. Insert the locking plate flushly into the panel box.

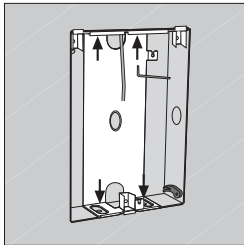


### Insert locking plate evenly

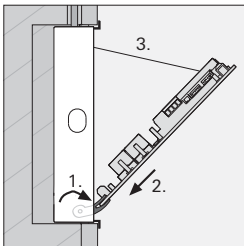
The locking plate must not be twisted while being inserted into the panel box and must not be under tension.



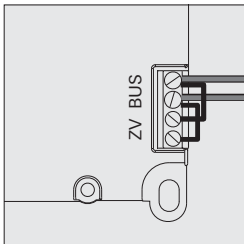
Push the locking plate inwards until the plastic brackets touch the wall.



2. Fasten the locking plate with the 4 Allen bolts and locking washers included.  
In order to guarantee a secure fastening of the front panel later, the Allen bolts must be firmly tightened.



3. Fold out both lateral mounting retainers (1.), slide the front panel of the Door Station Stainless Steel into the mounting retainers (2.) and attach the catch strap of the front panel to the hook of the locking plate (3.).



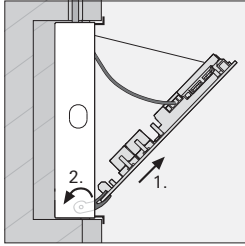
4. Connect the 2-wire bus to the Bus terminals.



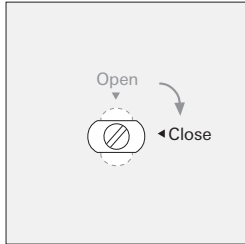
### Switch call button illumination off

To permanently switch the call button illumination off, remove the jumpers between BUS and ZV.

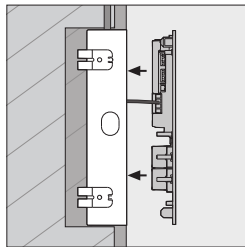




5. Pull the front panel from the mounting retainers (1.) and fold these in (2.).



6. Position the **(lower)** fastening bolt(s) of the front panel to "Close".



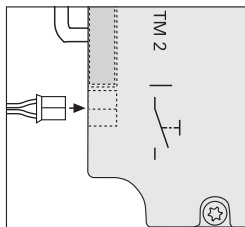
7. Mount the front panel onto the guide bolts and press it on until the upper and lower fastening bolts engage.


## Starting up

Once all of the devices (door and home stations, control device etc.) have been installed, the door communication system can be started up.

Start-up a door station is described in the system manual included with the control device.

## Multi-function input



A mechanical push button can be connected to the multi-function input  of the stainless steel door station's built-in loudspeaker via the included connection cable.

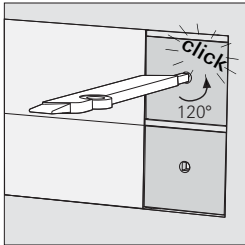
The push button then has the same function as a call button and can therefore be used, for example, as a call button or for controlling a switching actuator.

## Replacing inscription label

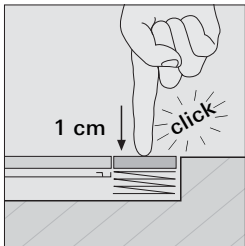
### Inscription labels

For labelling the Gira Door Station Stainless Steel, use only Gira inscription labels. The transparent plastic labels are non-fading, weather-resistant and wrinkle-free.

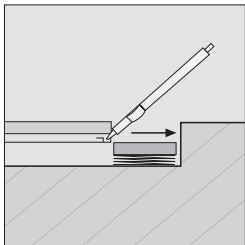
With the included release code, inscription labels for the first labelling are available free at [www.marking.gira.com](http://www.marking.gira.com)



1. Unlock the call button with the enclosed plastic key: twist the plastic key anti-clockwise until it engages.



2. Engage the call button:  
press the call button firmly inwards by approx. 1 cm.  
✓ The call button engages and stays in the pressed position.

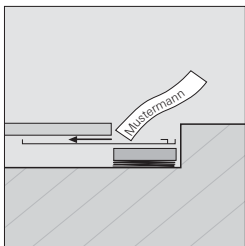


3. Grip under the glass cover with the flat side of the plastic key and twist out the inscription label carrier.

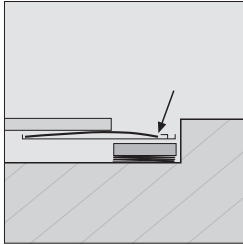


**Do not remove the inscription label carrier.**

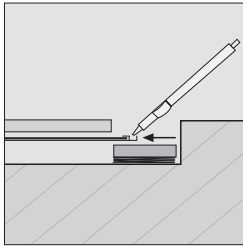
Do **not** lift and remove the inscription label carrier!



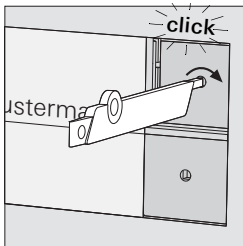
4. Remove the existing inscription label and slide the new inscription label into the inscription label carrier until it stops.



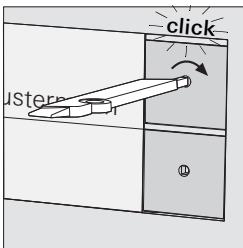
5. Position the inscription label underneath the clips of the inscription label carrier.



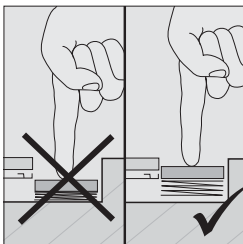
6. Slide in the inscription label carrier again.  
At the same time, position the inscription label with your finger.



7. Release the call button:  
To do this, press in the plastic key slightly and turn it clockwise until the call button is released from the lower position.



8. Lock the call button:  
To do this, turn the plastic key clockwise again until it engages.

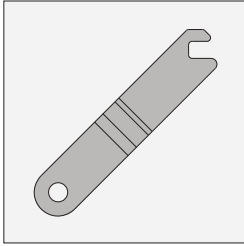


9. For function test, press the call button:  
the call button is correctly locked when

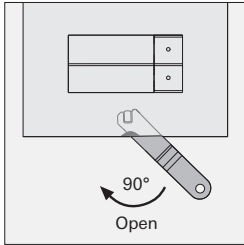
- the call button **cannot** be pressed in deeply and
- an acknowledgement tone is heard when the call button is pressed.

If the call button is not correctly locked, please repeat step 8.

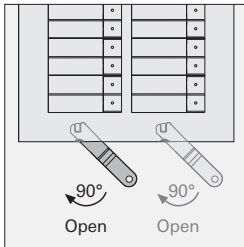
## Opening Door Station Stainless Steel



The included opening tool is required for opening the Door Station Stainless Steel.

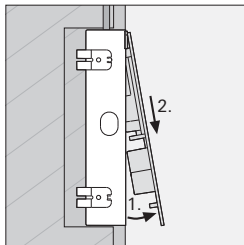


1. Turn the **(lower)** fastening bolt(s) with the opening tool to "Open".  
Single-column door stations have one lower fastening bolt, double-column door stations have two lower fastening bolts.  
The position of the fastening bolts is shown via small recesses on the lower side of the front panel.



### Take care with plastered walls

With repeated opening of the door station with plastered walls, the opening tool may damage the plaster.



2. Lift the front panel from the lower attachment (1.) and pull it at an angle downwards from the upper attachment retainers (2.).

## Operation

### Volume setting

The volume can be set separately at each door station.  
The volume setting must be made by two people.



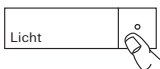
1. Press the "Systemprogr." button on the **control device** for 3 sec. to start programming mode.
  2. Briefly press a previously assigned call button at the **door station**.
  3. The second person accepts the door call at the **home station** (via receiver or speech button) and starts speaking.
  4. Briefly press the call button again at the **door station**.
- ✓ Volume changes during the voice connection when the button is pressed.  
There are four volume levels in total.  
The next-highest volume is set with each button press. When the loudest volume level is reached, the next button press sets the quietest volume level.
5. Ending the voice connection.  
The most recently set volume level is saved in the door station.
  6. Briefly press the "Systemprogr." button on the **control device** to exit the programming mode.

### Initiating a call (ringing)



1. Press the call button to trigger a call tone at the assigned home station.
- ✓ The button press is confirmed by an additional acknowledgement tone.
- ✓ If the conversation is accepted by the home station, the microphone opening is illuminated blue.

### Switching light on (in conjunction with a switching actuator)



1. Press the call button to switch on light or another device via an assigned switching actuator.
- ✓ The button press is confirmed by an additional acknowledgement tone.

## Technical data

---

Connections:	2 screw terminals for 2-wire bus 2 screw terminals for additional supply 2 system bus connector strips (6-pole) 1 video connector strip (2-pole) 2 sabotage contact screw terminals
Protection type:	IP 44
Operating temperature:	-25 °C to +70 °C
Dimensions (W x H x D):	
1-gang, 2-gang, 3-gang:	140 x 198 x 40 mm (panel box) 160 x 218 x 3 mm (front panel)
4-gang, 6-gang:	140 x 265 x 40 mm (panel box) 160 x 285 x 3 mm (front panel)
8-gang, 9-gang:	140 x 332 x 40 mm (panel box) 160 x 352 x 3 mm (front panel)
10-gang, 12-gang:	250 x 265 x 40 mm (panel box) 270 x 285 x 3 mm (front panel)

## Warranty

---

The warranty is provided in accordance with statutory requirements via the specialist trade.

Please submit or send faulty devices postage paid together with an error description to your responsible salesperson (specialist trade/installation company/electrical specialist trade).

They will forward the devices to the Gira Service Center.



Gira  
Giersiepen GmbH & Co. KG  
Elektro-Installations-  
Systeme  
Postfach 1220  
42461 Radevormwald  
Deutschland  
Tel +49 (0) 21 95 / 602 - 0  
Fax +49 (0) 21 95 / 602 - 191  
[www.gira.de](http://www.gira.de)  
[info@gira.de](mailto:info@gira.de)

10 41 09 22 20/11

# GIRA